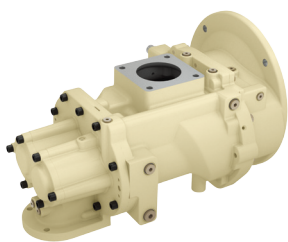


# Oil-Flooded Rotary Screw Air Compressors

The RM220i air compressor delivers the peace of mind you need in a reliable, time-tested package that lowers your operating costs and boosts productivity.

## World-class Performance

- **Intuitive KT controller** provides comprehensive access to your compressed air system (up to 8 integrated compressors) whether on site with our easy to use compressor interface or across the world through a remote monitoring device
- **Convenient top exhaust** facilitates easy ducting for removal or recovery of exhaust heat
- **Readily accessible components** housed behind a removable panel for easy serviceability



- **New innovative airend design** delivers improved efficiency and best-in-class airflow capacity
- **High-reliability O-ring fittings**, 46°C ambient rating and rugged nuisance failures

- **Air- or water-cooled packages** available to fit the needs of your compressed air system

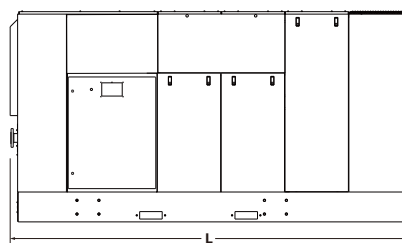
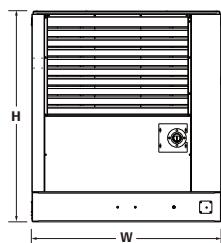
- **Extended-life Ingersoll Rand ULTRA EL coolant** lasts up to 16,000 hours to ensure increased uptime



### 50 Hz Performance

Model	Max. Pressure barg	Nominal Power kW	Capacity (FAD)* m <sup>3</sup> /min	Dimensions (Length x Width x Height) mm	HV Unit Dimensions (Length x Width x Height) mm	Low Voltage Weight kg	High Voltage Weight kg
RM220i-A7.5	7.5	225	45.6	4000 x 1930 x 2146	4650 x 1930 x 2146	5584	6707
RM220i-A8.5	8.5	225	43.2	4000 x 1930 x 2146	4650 x 1930 x 2146	5584	6707
RM220i-A10	10.0	225	38.8	4000 x 1930 x 2146	4650 x 1930 x 2146	5584	6707

\* FAD (Free Air Delivery) is full package performance including all losses, tested per ISO 1217:2009 Annex C



# RM220i Compressor Features

Category	Description	Standard	Optional
<b>Main Motor</b>	IP 23 motor	✓	
	IP 55 motor		✓
	High ambient rated 46°C	✓	
	Class F insulation B temperature rise	✓	
<b>Controller</b>	Full compressor diagnostic with alarm history	✓	
	Automatic maintenance indication	✓	
	Load/unload capacity regulation system	✓	
	Power conservation system	✓	
	Remote monitoring and control by ethernet connection	✓	
	Automatic start/stop shut down timer	✓	
	Remote load and unload	✓	
	Modulation control	✓	
	Power Outage Restart Option (PORO)		✓
	Multiple compressors system controllers		✓
	Visualisation system		✓
	<b>Power</b>	Star/delta starter	✓
Soft starter			✓
Phase monitor			✓
Voltage - 400 V +/-10%		✓	
Voltage - 6k, 10k			✓
High-voltage motor heaters		✓	
Low-voltage motor heaters			✓
Thermal protection for main motor			✓
<b>Lubricant</b>	16,000-hour life UltraCoolant	✓	
	Food grade coolant		✓
<b>Environmental</b>	Low noise enclosure	✓	
	IP55/NEMA 4 enclosure protection		✓
	Designed to help meet ISO 14000 obligations	✓	
	Oil containing frame	✓	
<b>Auxiliary Systems</b>	Cooling fan for air-cooled compressors	✓	
	Water separator and drain valve	✓	
	High dust air filter		✓
	Water-cooled		✓
	Seawater-cooled		✓
<b>Convenience</b>	Single point connectivity	✓	
	Steel skid, no foundations needed	✓	
<b>Services</b>	Factory standard warranty (12/18)	✓	
	UltraCare 5-year maintenance program		✓
<b>Documentation</b>	Performance test certificate	✓	
	Witness test certificate		✓



IngersollRandProducts.com

Ingersoll Rand (NYSE:IR) advances the quality of life by creating comfortable, sustainable and efficient environments. Our people and our family of brands—including Club Car®, Ingersoll Rand®, Thermo King® and Trane®—work together to enhance the quality and comfort of air in homes and buildings; transport and protect food and perishables; and increase industrial productivity and efficiency. We are a \$13 billion global business committed to a world of sustainable progress and enduring results.



Ingersoll Rand, IR and the IR logo are trademarks of Ingersoll Rand, its subsidiaries and/or affiliates. All other trademarks are the property of their respective owners. Ingersoll Rand compressors are not designed, intended or approved for breathing air applications. Ingersoll Rand does not approve specialised equipment for breathing air applications and assumes no responsibility or liability for compressors used for breathing air service. Nothing contained on these pages is intended to extend any warranty or representation, expressed or implied, regarding the product described herein. Any such warranties or other terms and conditions of sale of products shall be in accordance with Ingersoll Rand's standard terms and conditions of sale for such products, which are available upon request. Product improvement is a continuing goal at Ingersoll Rand. Any designs, diagrams, pictures, photographs and specifications contained within this document are for representative purposes only and may include optional scope and/or functionality and are subject to change without notice or obligation.