

GHH RAND®

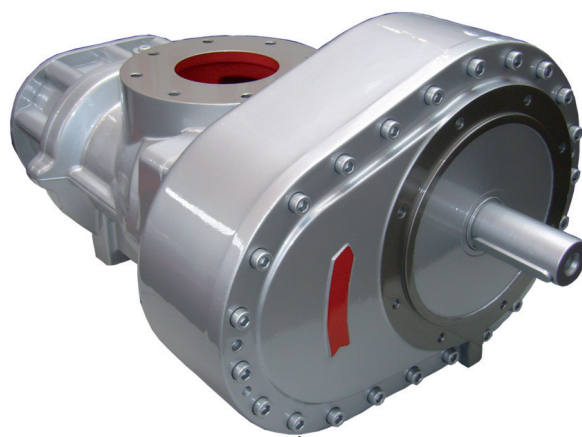
OS110G – Oil-Injected Screw Compressor Airend

The OS110G is a single stage oil-injected screw compressor airend with an integrated gear drive, which can be used for general industrial applications.

Operating Range

Parameters	Units	Min	Max
Power	kW / hp	13.8 / 18.5	139.3/186.8
Discharge Pressure, abs.	bar / psi	6 / 87	16 / 232
Volume Flow	m ³ /min / cfm	2.8 / 100.5	14.5 / 510.8

Medium: Air, Inlet temp. 20°C/68°F, Discharge temp. 80°C/176°F, Inlet pressure 1 bar(a)/14.5 psi(a), RH: 60%



Technical Data

Parameters	Units	Data
Length	mm	744.5
Width	mm	518.5
Height	mm	388
Weight	kg	252
Inlet DN	mm	125
Outlet DN	mm	90

GHH RAND recommends:



- Maximize life and efficiency with Primecool or Primecool Plus (food grade)
- Ask your sales rep. for details

GHH RAND Schraubenkompressoren GmbH
Max-Planck-Ring 27 • 46049 Oberhausen • Germany
Phone +49 (0) 208 9994-0 • Fax +49 (0) 208 9994-111
industrial-sales@ghhrand.com • www.ghhrand.com