



GHH RAND®

CS1050 IC²²

Trusted German Engineering,
Just Got Even Better!



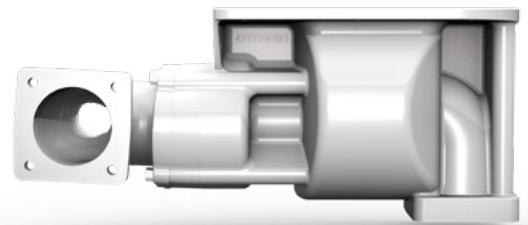
Innovative “Next Generation” Intercooled Compressor Solution for Heat Sensitive Dry Bulk Products. Now Featuring the New Silencer Concept.

The Next Generation CS1050 IC² belt driven solution from GHH RAND® delivers clean oil-free, cooled compressed air, suitable for the pneumatic conveyance of heat-sensitive dry bulk products typically as required in the food and plastics industries. Now including an all new silencer which is part of the GHH RAND continuous road of development in the dry bulk unloading industry.

Clean cool pressurised air, paired with a new silencing concept designed by our Ingersoll Rand Transport Solutions Centre of Engineering Excellence in Germany, the DTV is the brainchild of engineers highly experienced in the Dry Bulk Discharge Equipment market.

DTV utilizes a cutting-edge silencing technology, a first in the Road Transport Dry Bulk discharge industry.

The compressor package, manufactured in Germany offers quality, reliability, guaranteed performance, and long service life. For our customers, the results are long term efficiency with consistent daily results.



DTV

Bespoke Solution

Cooled
Discharge Air

Improved
Efficiency

Low Noise



www.ingersollrand.com/ghhrandtransport

Applications

The GHH RAND® dry-running rotary screw solution is ideally suited to discharging bulk goods at optimal rates to reduce your discharge times.

The IC² (Intercooled) package is the perfect choice for heat sensitive products that require temperature controlled cooled discharge air, protecting the product from degradation.

Additional applications:

The IC² solution is suitable for other conveyed products, including:



Powdered Chemicals



Pharmaceutical Materials



Plastic Pellets



Animal Feed



Features & Benefits

Package Designed and Made in Germany

Plug and play with an easy-to-install, complete package module available and configured precisely to your specific needs.

Choice of Solutions to Suit Customer Requirements

The CS1050 IC² solution is available with a unique new multiple arrangement for the positioning of the bearing block, allowing an optimised prop-shaft drive angle, providing a long service life.

Contaminant-Free Rotors for Sensitive Products

Peace of mind is provided against product contamination with an applied corrosion resistant coating of the rotors supporting compliance of products discharged within the food industry.

Robust & Durable Mounting Frame

All bracketry and mounting frames are fully FEA validated, ensuring strong durable and robust mounting of the solution for all European vehicles. Our concept being that of fit and forget even under challenging road conditions.

Drive Options

Belt drive options are available in a range of solutions optimised to meet your exact requirements, reducing fuel consumption, noise and emissions.

Pioneering Silencing Technology

New cutting edge silencer concept not previously utilised in the Road Transport Dry Bulk market. This new silencer with a unique Reactive design delivers low noise whilst ensuring no silencer infill migration into the discharge line. Additionally this new silencer design yet further improves efficiency with reduced back pressure loss and reduced weight.

Performance			
Parameter	Unit	Min.	Max.
Suction volume compressor airend (@ 2.0 bar(g))	m ³ /h	420	900
Input speed package	min ⁻¹	800	1800
V-belt drive ratio	i =	1.25	
Compressor speed	min ⁻¹	1000	2000
Power consumption	kW	max. 64	
Weight	kg	392	
Measurements	LxWxH cm	905/926 x 775 x 714/737	

Performance data, weights & dimensions are typical only.