

# GHH RAND®

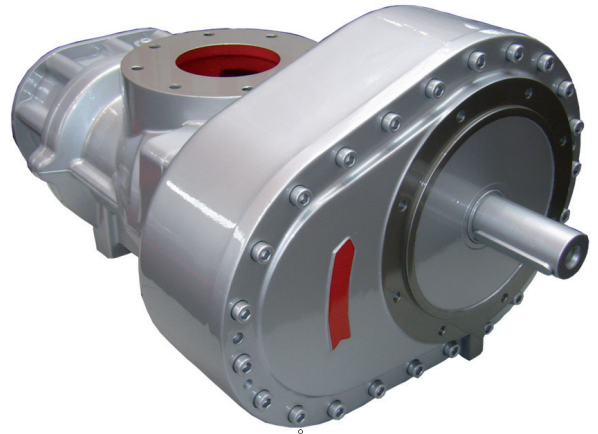
## OS110G – Oil-Injected Screw Compressor Airend

The OS110G is a single stage oil-injected screw compressor airend with an integrated gear drive, which can be used for general industrial applications.

### Operating Range

| Parameters               | Units                     | Min         | Max          |
|--------------------------|---------------------------|-------------|--------------|
| Power                    | kW / hp                   | 13.8 / 18.5 | 139.3/186.8  |
| Discharge Pressure, abs. | bar / psi                 | 6 / 87      | 16 / 232     |
| Volume Flow              | m <sup>3</sup> /min / cfm | 2.8 / 100.5 | 14.5 / 510.8 |

Medium: Air, Inlet temp. 20°C/68°F, Discharge temp. 80°C/176°F, Inlet pressure 1 bar(a)/14.5 psi(a), RH: 60%



### Technical Data

| Parameters | Units | Data  |
|------------|-------|-------|
| Length     | mm    | 744.5 |
| Width      | mm    | 518.5 |
| Height     | mm    | 388   |
| Weight     | kg    | 252   |
| Inlet DN   | mm    | 125   |
| Outlet DN  | mm    | 90    |

### GHH RAND recommends:



- Maximize life and efficiency with Primecool or Primecool Plus (food grade)
- Ask your sales rep. for details

**Ingersoll-Rand Trading GmbH**  
Max-Planck-Ring 27 • 46049 Oberhausen • Germany  
Phone +49 (0) 208 9994-0 • Fax +49 (0) 208 9994-111  
industrial-sales@ghhrand.com • www.ghhrand.com