

Installation Instructions for FREE SPOOL RETRO-FIT KIT

This instruction sheet provides information for service personnel to retro-fit the Free Spool assembly. This sheet should be used in conjunction with the Parts, Operation and Maintenance Manual MHD56117.

PROCEDURES

Disassembly

Throughout this instruction sheet there are steps and procedures which, if not followed, may result in a hazard. Refer to the Parts, Operation and Maintenance Manual MHD56117 (FA2A) for an explanation of these signal words which are used to identify the level of potential hazard.

Read the instructions listed in the 'Maintenance' section of the manual prior to performing this procedure.

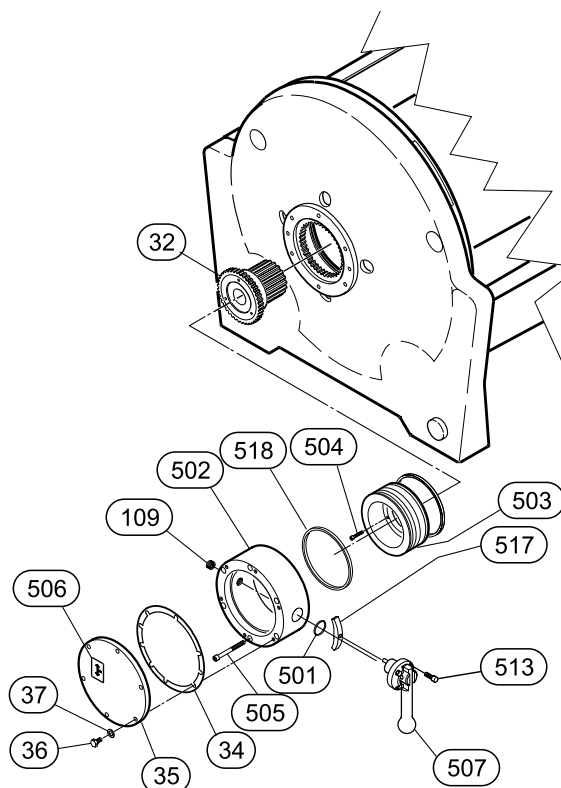
1. Remove capscrews (36) and washers (37) and remove cover (35). Remove and discard gasket (35).

NOTICE

• There may be small amounts of oil coming out of housing, use suitable materials to contain and clean this leakage.

2. Remove capscrews (505) and pull Free Spool Assembly away from Upright.

ITEM NO.	DESCRIPTION OF PART	QTY TOTAL	PART NUMBER
---	Free Spool Kit	1	27317
32	Output Shaft	1	24817
34	Gasket	2	71262257
35	Cover	1	21732
36	Capscrew	6	71266613
37	Washer	6	71303408
109	Plug	1	71069009
501	O-Ring	1	71137988
502	Housing	1	27315
503	Support Shaft	1	27314
504	Capscrew	3	54610
505	Capscrew	6	71138275
506	Label	1	71328793
507	Shifter Assembly	1	26172
513	Capscrew	4	71307284
517	Shoe	1	27318
518	Guide Ring	2	27316



(Dwg Mhp1984)

Assembly

1. Insert shoe (517) into groove in support shaft (503). A small amount of grease will hold this in position.
2. Insert this assembly (items 32 and 503 come assembled from the factory) into housing (502).
3. Align pin in shifter assembly (507) with shoe. Install shifter assembly, secure with and finger tighten capscrews (513).
4. Place one gasket (34) on upright and insert Free Spool assembly into upright. Assembly may have to be rotated slightly to allow teeth to engage. Shifter handle should be pointed down. Insert capscrews (505) into housing and tighten.
5. Place gasket (34) on housing face and secure with cover (35), capscrews (36) and washers (37).

Form MHD56196

Edition 2

August 1999

71353999

© 1999 Ingersoll-Rand Company

INGERSOLL-RAND
MATERIAL HANDLING

United States Office Locations

For Order Entry, Order Status and Technical Support

**Ingersoll-Rand
Material Handling**
P.O. Box 24046
2724 Sixth Avenue South
Seattle, WA 98124-0046
Phone: (206) 624-0466
Fax: (206) 624-6265

**Ingersoll-Rand
Distribution Center**
P.O. Box 618
510 Hester Drive
White House, TN 37188
Phone: (615) 672-0321
Fax: (615) 672-0801

Web Site:
www.ingersoll-rand.com

Regional Sales Offices

Chicago, IL
888 Industrial Drive
Elmhurst, IL 60126
Phone: (630) 530-3800
Fax: (630) 530-3891

Detroit, MI
23192 Commerce Drive
Farmington Hills, MI 48335
Phone: (248) 476-6677
Fax: (248) 476-6670

Houston, TX
450 Gears Road
Suite 210
Houston, TX 77067-4516
Phone: (281) 872-6800
Fax: (281) 872-6807

Los Angeles, CA
11909 E. Telegraph Road
Santa Fe Springs,
CA 90670-0525
Phone: (562) 948-4189
Fax: (562) 948-1828

Philadelphia, PA
P.O. Box 425
900 E. 8th Ave., Suite 103
King of Prussia, PA 19406
Phone: (610) 337-5930
Fax: (610) 337-5912

International Office Locations

Offices and distributors in principal cities throughout the world. Contact the nearest **Ingersoll-Rand** office for the name and address of the distributor in your country or write/fax to:

**Ingersoll-Rand
Material Handling**
P.O. Box 24046
2724 Sixth Avenue South
Seattle, WA 98124-0046
USA
Phone: (206) 624-0466
Fax: (206) 624-6265

**Canada
National Sales Office
Regional Warehouse
Toronto, Ontario**
51 Worcester Road
Rexdale, Ontario
M9W 4K2
Phone: (416) 213-4500
Fax: (416) 213-4510
Order Desk
Fax: (416) 213-4506

Regional Sales Offices

Edmonton, Alberta
1430 Weber Center
5555 Calgary Trail N.W.
Edmonton, Alberta
T6H 5G8
Phone: (403) 438-5039
Fax: (403) 437-3145

Montreal, Quebec
3501 St. Charles Blvd.
Kirkland, Quebec
H9H 4S3
Phone: (514) 695-9040
Fax: (514) 695-0963

British Columbia
1200 Cliveden Avenue.
Delta, B.C.
V3M 6G4
Phone: (604) 523-0803
Fax: (604) 523-0801

**Latin America Operations
Ingersoll-Rand
Production Equipment
Group**
730 N.W. 107 Avenue
Suite 300, Miami, FL
33172-3107
Phone: (305) 559-0500
Fax: (305) 222-0864

**Europe, Middle East and
Africa
Ingersoll-Rand
Material Handling
Douai Operations**
111, avenue Roger Salengro
59450 Sin Le Noble, France
Phone: (33) 3-27-93-08-08
Fax: (33) 3-27-93-08-00

**Asia Pacific Operations
Ingersoll-Rand**
Suite 1201-3 12/F
Central Plaza
18 Harbour Road
Wanchai, Hong Kong
Phone: (852) 9794 1673
Fax: (852) 9794 7895

**Russia
Ingersoll-Rand**
Kuznetsky Most 21/5
Entrance 3
Moscow 103895
Russia
Phone: (7) 501 923 9134
Fax: (7) 501 924 4625