



16574469  
Edition 4  
September 2009

## DC Electric Tools, Angle & In-Line

QE6 Series

---

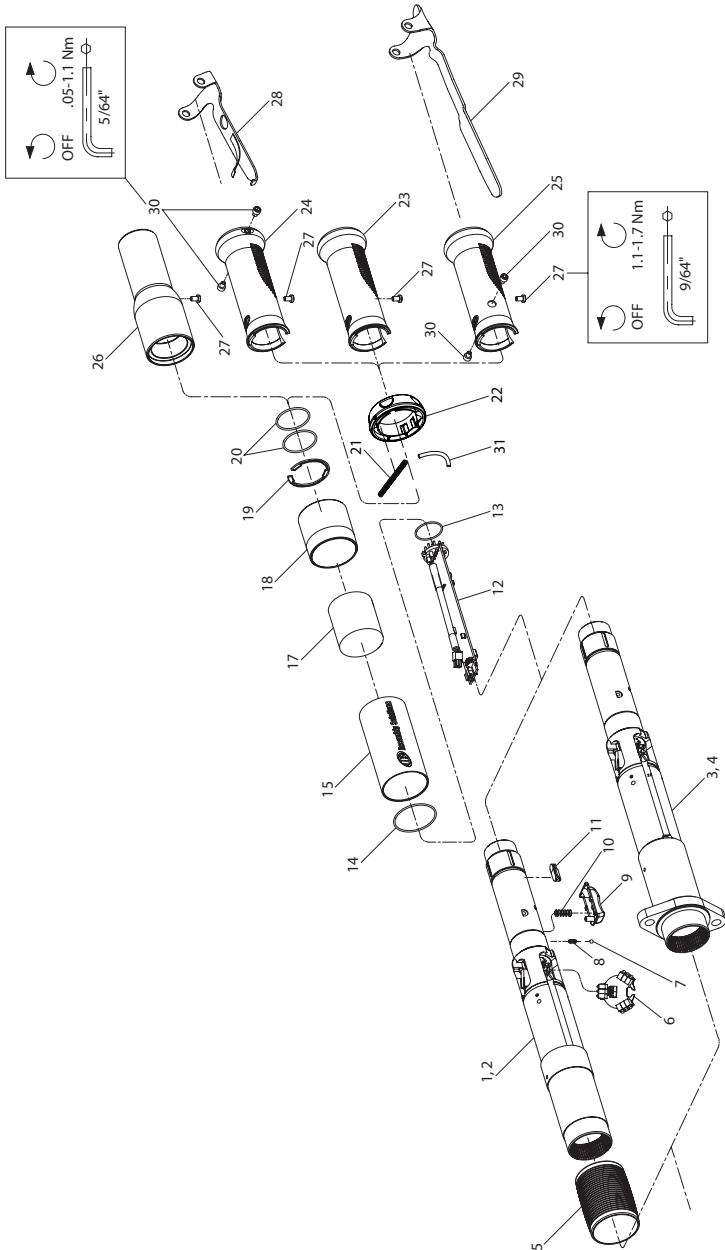
# Parts Information



Save These Instructions

 **Ingersoll Rand**

# QE6 Motor Housing Assembly, Grips and levers Exploded Diagram



(Dwg. TP2022)

## QE6 Motor Housing Assembly, Grips and levers Parts List

Item	Part Description	Part Number	Item	Part Description	Part Number
	Motor Housing Assembly		17	Warning Label	GEA40-99
1	Mounting 'P' (refer to Table 1)	GEA40-M53-7	18	Label - Cover Lens	GEA40-600
2	Mounting 'P' (refer to Table 1)	GEA40-M53-11	19	Retaining Ring	GEA40-208
3	Mounting 'F' (refer to Table 1)	GEF40-M53-7	20	O-Ring	GEA40-801
4	Mounting 'F' (refer to Table 1)	GEF40-M53-11	** 21	Spring	GEA40-329-52-1
5	Gearcase Sleeve	GEA40-145	** 22	Reverse Ring	GEA40-329-1
6	LED Board	GEA40-98		Handle Grip	
7	Ball	AV1-255	23	Tool Activation 'T' (Trigger type)	GEA40-135
8	Spring	GEA40-329-51	24	Tool Activation 'L' (Short Lever type)	GEA40-135SL
9	Trigger	GEA40-273	25	Tool Activation 'E' (Extended Lever type)	GEA40-135EL
10	Spring	GEA40-273-51	26	Tool Activation 'C' (Controller Input, Sleeve type)	GEF40-137
† 11	Memory Chip	TRP-A528	27	Socket Cap Screw (Low Head)	GEA40-135-68
* 12	Communication Board	GEA40-B499	28	Lever - Short (Used with Tool Activation 'L')	GEA40-273SL
13	Retainer	GEA40-2309-104	29	Lever - Extended (Used with Tool Activation 'E')	GEA40-273EL
14	O-Ring	GEA40-136-211	30	Socket Cap Screw	GEA40-273EL-68
15	Housing Cover	GEA40-136	31	Guide Pin	GEA40-329-53

\* If tool serial number is before A07K, also order new GEA40-273.

\*\* If tool serial number is before A07F, order kit GEA40-K329 instead.

† Optional Part. Order O-Rings GEA40-801 with memory chip.

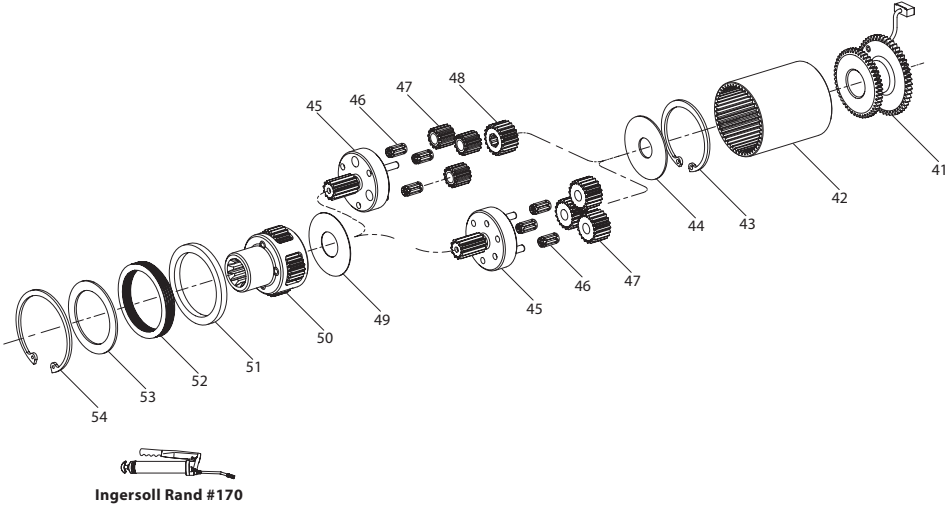
### Table 1 - Motor Housing Assembly Used

Motor Housing Assembly Prefix	Non-Flanged (P)	Flanged (F)
QE6S()020	GEA40-M53-7	GEF40-M53-7
QE6S()028		
QE6S()050		
QE6A()030		
QE6A()040		
QE6A()080		
QE6Z()020		
QE6Z()028		
QE6Z()050	GEA40-M53-7	GEF40-M53-7
QE6S()033	GEA40-M53-11	GEF40-M53-11
QE6A()055	GEA40-M53-11	GEF40-M53-11
QE6Z()033	GEA40-M53-11	GEF40-M53-11

### Table 2 - QE6 Accessory Kits

Item	Part Description	Part Number	Item	Part Description	Part Number
	Kit, Grip - Lever (Extended) (X)	GEA40-K98EL		Kit, Grip - Lever (Short) (x)	GEA40-K98SL
29	Lever, Extended	GEA40-273EL	28	Lever, Short	GEA40-273SL
25	Handle, Grip (2)	GEA40-135EL	24	Handle, Grip	GEA40-135SL
30	Fastener (2)	GEA40-273EL-68	27	Screw, Socket - Cap (2)	GEA40-135-68
10	Spring (2)	GEA40-278-51			

## QE6 Transducer Assembly and Gearing Components Exploded Diagram



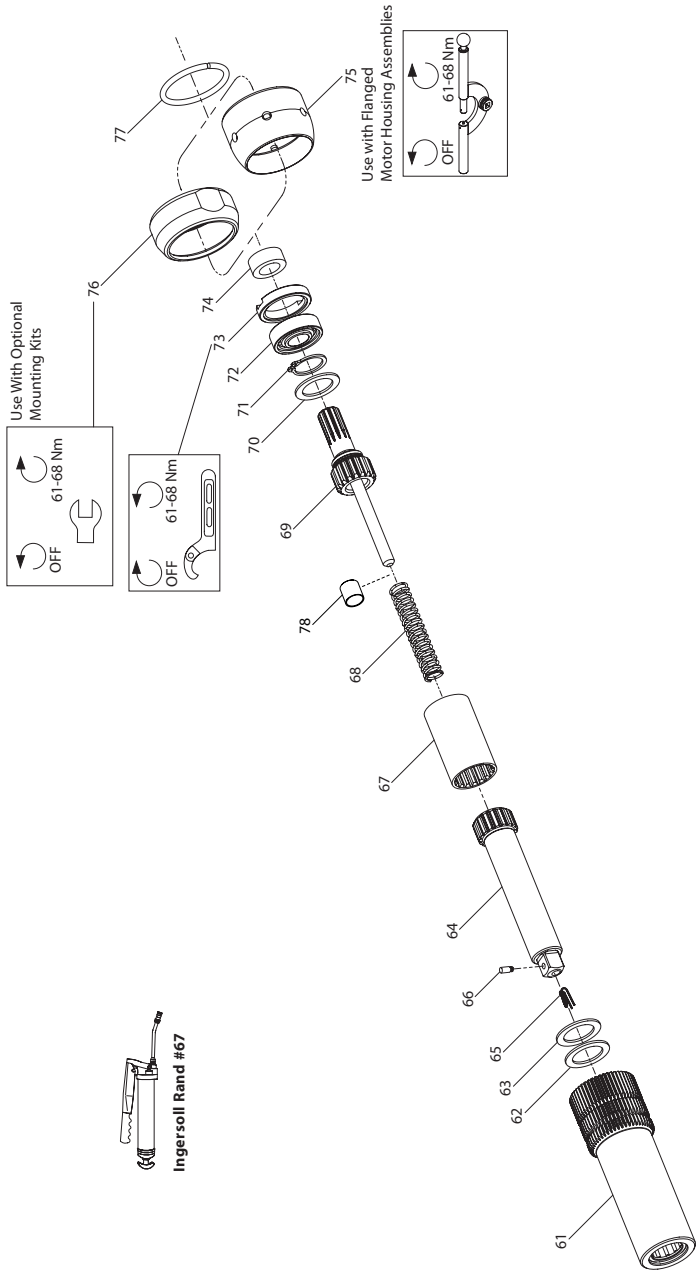
(Dwg. TP2023)

## QE6 Transducer Assembly and Gearing Components Parts List

Item	Part Description	QE6A{ }080{ }	QE6A{ }055{ }	QE6A{ }040{ }	QE6A{ }030{ }
		QE6S{ }050{ }	QE6S{ }033{ }	QE6S{ }028{ }	QE6S{ }020{ }
		Part Number			
41	Transducer Assembly	GEA40-A756-50	GEA40-A756-50	GEA40-A756-50	GEA40-A756-50
	Gear Pack Assembly	GEA40-40-M37	GEA40-28-M37	GEA40-22-M37	GEA40-17-M37
42	Ring Gear	GEA40-406	GEA40-406	GEA40-406	GEA40-406
43	Retaining Ring	4E-118	4E-118	4E-118	4E-118
44	Spacer, Rear	GEA40-81	GEA40-81	GEA40-81	GEA40-81
45	Gearhead Assembly (1st Stage)	GEA40-A216-20	GEA40-A216-19	GEA40-A216-17	GEA40-A216-14
*	Gearhead	---	---	---	---
*	Planet Pin	---	---	---	---
46	Needle Bearing (1st)	6WTM-500	DAA40-500	6WTM-500	6WTM-500
47	Planet Gear (1st)	4RLL-10	DEA31-10	4RLN-10	GEA40-10-14
48	Sun Gear (1st)	---	---	DAA25-17	GEA40-17-21
49	Spacer	GEA40-80	GEA40-80	GEA40-80	GEA40-80
50	Spindle Assembly (2nd Stage)	GEA40-A8-18	GEA40-A8-18	GEA40-A8-18	GEA40-A8-18
*	Spindle	---	---	---	---
*	Planet Pin	---	---	---	---
*	Planet Gear (2nd)	---	---	---	---
*	Planet Bearing (2nd)	---	---	---	---
51	Grease Seal	GEA40-248	GEA40-248	GEA40-248	GEA40-248
52	Wave Spring	GEA40-250	GEA40-250	GEA40-250	GEA40-250
53	Retainer Washer	DEM40-81	DEM40-81	DEM40-81	DEM40-81
54	Retaining Ring	W64-118	W64-118	W64-118	W64-118

\* Item included as part of subassembly.

# QE6 In-line Attachment Components Exploded Diagram



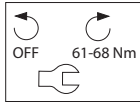
(Dwg. TP2097)

## QE6 In-line Attachment Components Parts List

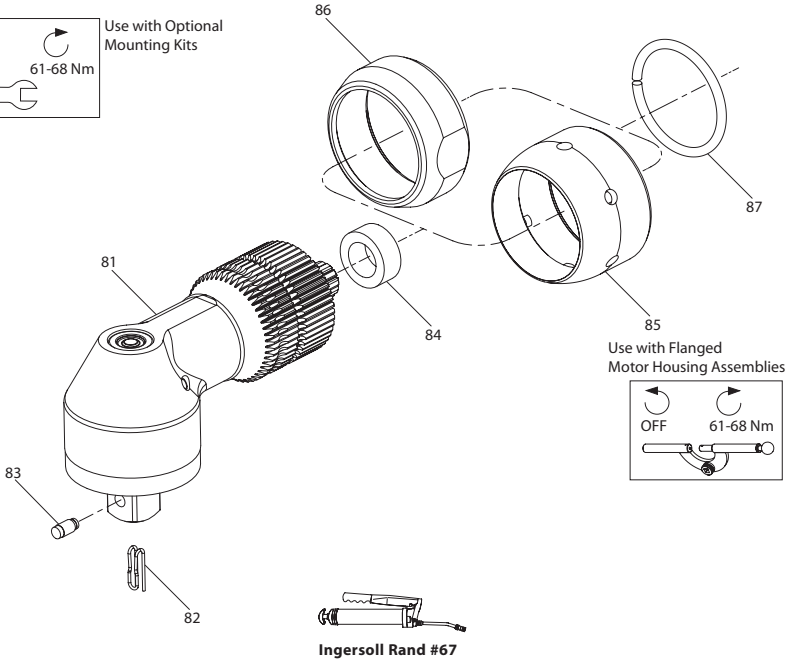
Item	Part Description	Part Number	Item	Part Description	Part Number
†	Spindle, Square - Drive (Spring Loaded)	---	66	Socket Retaining Pin	
	Assembly Attachment			for 41S06, 61S06, 81S06	5020-716
	QE6...41S06 (3/8" Sq. Drive & 4" Long Shank)	GE456		for 41S08, 61S08, 81S08	804-716
	QE6...41S08 (1/2" Sq. Drive & 4" Long Shank)	GE458	67	Coupler	
	QE6...61S06 (3/8" Sq. Drive & 6" Long Shank)	GE656		for 41S06, 41S08	120E4-581
	QE6...61S08 (1/2" Sq. Drive & 6" Long Shank)	GE658		for 61S06, 61S08, 81S06, 81S08	120E6-581
	QE6...81S06 (3/8" Sq. Drive & 8" Long Shank)	GE856	68	Disengaging Spring	
	QE6...81S08 (1/2" Sq. Drive & 8" Long Shank)	GE858		for 41S06, 41S08	120E4-626
† 61	Housing Assembly			for 61S06, 61S08, 81S06, 81S08	120E6-626
	for 41S06, 41S08	120E4-A580	69	Drive Spindle Assembly	120E4-A584
	for 61S06, 61S08	120E6-A580	70	Washer	120E4-106
	for 81S06, 81S08	120E8-A580	71	Retaining Ring	FEA100-20
62	Washer	120E4-105	72	Rear Spindle Bearing	8SA32-593
63	Washer	120E4-106	73	Bearing Cap	8SA32-531
64	Square Drive Spindle		74	Spacer	GEA40-591
	for 41S06	120E4S6-586	75	Coupling Nut, long (with holes)	GEA40-27
	for 41S08	120E4S8-586	76	Coupling Nut, short (with flats)	DAA4-27
	for 61S06	120E6S6-586	77	Retainer	DAA4-29
	for 61S08	120E6S8-586	78	Spindle Lock	
	for 81S06	120E8S6-586		for 41S06 & 41S08	120E4-LOCK
	for 81S08	120E8S8-586		for 61S06, 61S08, 81S06 and 81S08	120E6-LOCK
65	Socket Retainer Spring				
	for 41S06, 61S06, 81S06	401-718			
	for 41S08, 61S08, 81S08	5UHD-718			

† Item contains Spindle Bearings.

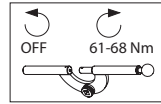
## QE6 Angle Assembly Attachment Exploded Diagram



Use with Optional Mounting Kits



Use with Flanged Motor Housing Assemblies



Ingersoll Rand #67

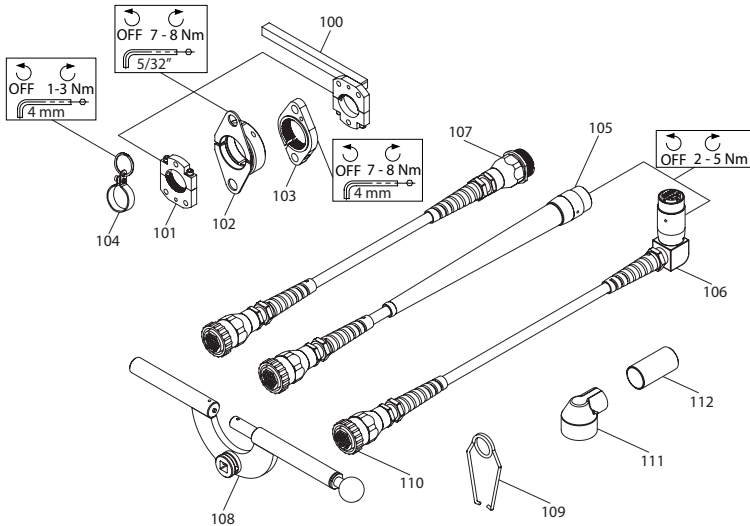
(Dwg. TP2098)

## QE6 Angle Assembly Attachment Parts List

Item	Part Description	QE6...A2S06	QE6...A4S06	QE6...A4S08	QE6...A5S08
		Part Number			
• 81	Angle Assembly Attachment	GAA2S6	GAA4S6	GAA4S8	GAA5S8
82	Socket, Retaining Spring	401-718	401-718	5UHD-718	5UHD-718
83	Socket, Retaining Pin	5020-716	5020-716	804-716	804-716
84	Spacer	GEA40-591	GEA40-591	GEA40-591	GEA40-591
85	Coupling Nut, Long (with holes)	GEA40-27	GEA40-27	GEA40-27	GEA40-27
86	Coupling Nut, Short (with flats)	DAA4-27	DAA4-27	DAA4-27	DAA4-27
87	Retainer	DAA4-29	DAA4-29	DAA4-29	DAA4-29

- Item 81 includes items 82 and 83.

## QE6 Accessories Exploded Diagram (Optional)



(Dwg. TP2103-C)

## QE6 Accessories Parts List (Optional)

Item	Part Description	Part Number	Item	Part Description	Part Number
**100	Reaction Bar Assembly	DEA120-K48	111	Angle Head Sleeve	
**101	Mounting Plate Assembly	DAM120-K48		for Model {}A2S06	GEA40-170
**102	Swivel Hanger Kit	GEA40-K364		for Model {}A4S06, {}A4S08	GEA40-171
**103	Mounting Plate Assembly (Flanged)	GEM120-K48		for Model {}A5S08	GEA40-172
**104	Tool Hanger Assembly	GEA40-A365		for Model {}A2S06 (Extended Boot)	GAA2-170
105	Power Cord Assembly (3 Meter)	GEA40-CORD-3M		for Model {}A4S06, {}A4S08 (Extended Boot)	GAA4-170
	Power Cord Assembly (6 Meter)	GEA40-CORD-6M		for Model {}A5S08 (Extended Boot)	GAA5-170
	Power Cord Assembly (10 Meter)	GEA40-CORD-10M			
106	Power Cord Assembly, 90 Deg (3 Meter)	GEA40-CORD-3M-90	*	Socket Tray Retaining Pin & Spring (for 3/8" and 1/2" square drives)	KIT-PFS
	Power Cord Assembly, 90 Deg (6 Meter)	GEA40-CORD-6M-90			
	Power Cord Assembly, 90 Deg (10 Meter)	GEA40-CORD-10M-90			
107	Power Cord Extension Assembly (10 Meter)	GEA40-EXT-10M	*	Socket Tray Retaining Pin & Spring (for 3/8" square drive only, Qty: 5 of each)	GEA15-38KIT-5
	Power Cord Extension Assembly (20 Meter)	GEA40-EXT-20M			
	Power Cord Extension Assembly (40 Meter)	GEA40-EXT-40M	*	Socket Tray Retaining Pin & Spring (for 1/2" square drive only, Qty: 5 of each)	GEA40-38KIT-5
108	Spanner Wrench	GEA40-478	112	Spindle Lock	
109	Suspension Bail	GEA40-478		for 41S06 & 41S08	120E4-LOCK
110	Coupling Ring	GEA40-26F-12		for 61S06, 61S08, 81S06 & 81S08)	120E6-LOCK

\* Not Illustrated.

\*\* To be used with QE6 Series 'non-flanged' Motor housing Assembly(s).

## Packaging (Corrugated Box)

Packaging P/N	Description
BOX-30	Corrugated Box (For Inline & Offset Tools)
BOX-30X	Foam (For Inline & Offset Tools)
BOX-28	Corrugated Box (For Angle & Power Unit Tools)
BOX-20X	Foam (For Angle & Power Unit Tools)

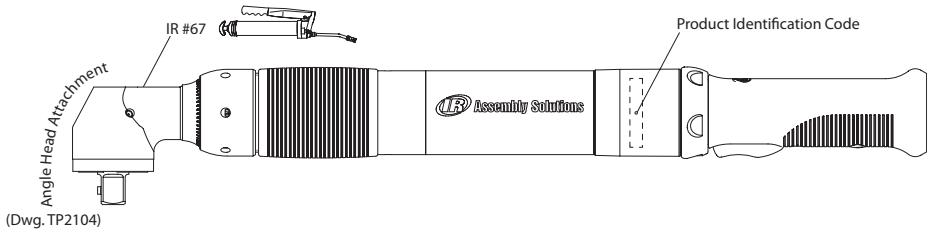
## Greases

Grease P/N	Description
67-4T	#67 Grease, 4 oz
67-1 LB	#67 Grease, 1 lb
67 8 LB	#67 Grease, 8 lb
GTH-1	Grease Tube Head (For QE Angle Tools. Use with 4 oz Grease Tube.)
170-1LB	#170 Grease, 1 lb
170-8LB	#170 Grease, 8 lb

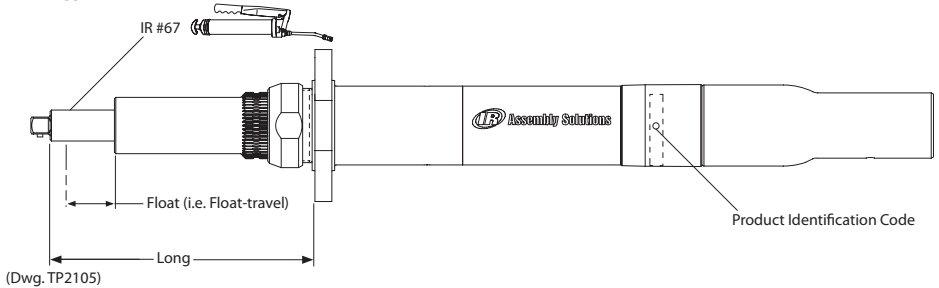


## QE6 Tool Assemblies Exploded Diagram

### Angles



### In-Lines



**Table 3 - QE6 Suggested Tools Parts List**

Item	Tool Used	Part Description	Where Used?
1	Spanner Wrench	IR Part #GEA40-478	Coupling Nut
2	Pin Spanner Wrench	3 mm or 1/8" pin	Motor Housing Assembly, Cable
3	Torque Wrench	1/2" Sq. Drive, 50 ft-lb capacity	General use
4	Adjustable Pin Wrench	---	In-Lines, Bearing Caps
5	Adjustable Wrench	---	Coupling Nut (with flats)
6	5/64" Hex Key	---	Cap Screws (Low Socket Head)
7	9/64" Hex Key	---	Cap Screws (Regular Head)
8	Internal Snap Ring Pliers	---	General use
9	Pick	---	O-Rings (behind Reverse Ring), Smalley Ring, etc.

### Parts and Maintenance

When the life of the tool has expired, it is recommended that the tool be disassembled, degreased and parts be separated by material so that they can be recycled.

Tool repair and maintenance should only be carried out by an authorized Service Center.

Refer all communications to the nearest **Ingersoll Rand** Office or Distributor.

### Related Documentation

For additional information refer to:

Product Safety Information Manual 16573685.

Product Information Manual 16576951.

Maintenance Information Manual 16575169.

Manuals can be downloaded from [www.ingersollrandproducts.com](http://www.ingersollrandproducts.com).

---

**Notes:**

**Notes:**

---

[www.ingersollrandproducts.com](http://www.ingersollrandproducts.com)

© 2009 *Ingersoll Rand* Company

